

Hello,

We are very pleased to present the following machine for your review and approval:

2007 Mori Seiki ZT-2500Y

CNC Turning Center

Serial number: ZT250GD0220
Front chuck: SchunkHSH-350, 13.78"
Opposing chuck: Schunk 215--66, 8.46"---2.6" bore.
Swing: 26"
Swing over cross slide: 29"
Center distance: 39"
Max turning diameter: 14"
Bar capacity: 3"
X-axis travel: 10"
Y-axis travel: ± 1.9 "
Z-axis travel: 40"
Spindle 2, B-axis travel: 40"
Spindle 1 speed range: 4,000 rpm, 2 steps
Spindle 1 nose: A-2-8
Spindle 2 speed range: 6,000 rpm
Spindle 2 nose: A-2-5
Turret stations, both turrets: 12 stations
Rotary tool spindle speed: 6,000 rpm
Rotary tool capacity: Drill 1", Tap M 20
Spindle 1 motor: 15/22 hp
Spindle 2 motor: 11/7 hp
Rotary tool motor: 3.7/5.5 hp
Dimensions: Length 159" x Width 107" x Height 103"
Weight: 29,700 lbs. apx.

-EQUIPPED WITH-

Fanuc 18iT CNC Control
Chip Conveyor
Available Books And Manuals



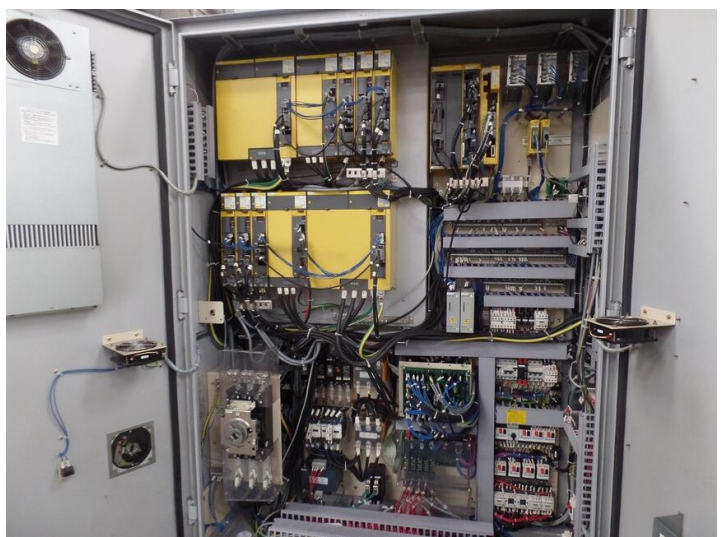
PRICE.....\$124,500

Best Regards,

Mike Heim - Sales Manager



Two Spade Machinery LLC
Office: (860) 356-4439
Mobile: (207) 205-4761
Email: mike@2spade.com



MACHINE MODEL : ZT2500Y

SERIAL NO. : ZT250GD0220

PHASE : 3

FREQUENCY : 60 Hz

VOLTAGE : AC 220 V

FULL LOAD CURRENT : 229 A

CURRENT RATING OF
THE SPINDLE MOTOR : 183 A

INTERRUPTING CAPACITY : 5 kA

SHORT CIRCUIT CURRENT : 1 kA
220 V MAXIMUM

ELECTRICAL DIAGRAM NO. : ZT250GD0220

RATED POWER : 87 kVA

MASS OF MACHINE : 13500 kg

Factory ID is # 1

DATE : 9 M 2007 Y

MORI SEIKI CO., LTD.

2-35-16 Meieki, Nakamura-ku,
Nagoya City Aichi 450-0002, JAPAN

MADE IN JAPAN

M49213A

英 語