

Hello,

We are very pleased to present the following machine for your review and approval:

2014 Southwestern Industries TRAK 20P

HS Vertical Machining Center

TABLES SIZE 18" X 15"
TABLE LOAD CAPACITY 500 LBS
TRAVELS:
TABLE (X-AXIS) 14"
SADDLE (Y-AXIS) 12"
HEAD (Z-AXIS) 17"
MAX SPINDLE NOSE TO TABLE 20.25"
MIN SPINDLE NOSE TO TABLE 2.75"
SPINDLE CENTER TO COLUMN FACE 14"
QUILL DIAMETER 2.2"
SPINDLE TAPER #30BT
SPINDLE SPEED RANGE 250 - 5,000 RPM
SPINDLE MOTOR 3 HP
MAX RAPID SPEEDS 500 IPM
APPROXIMATE DIMENSIONS: 30.5"W x 52"D x 101"H
APPROXIMATE MACHINE WEIGHT 2,400 LBS.

-EQUIPPED WITH-

PROTO-TRAK MODEL: TMX CONTROL,
CONVERSATIONAL OR G-CODE PROGRAMMING,
5" LCD SCREEN,
RIGID TAPPING, LINEAR & CIRCULAR INTERPOLATION,
THREE AXIS, CANNED CYCLES,
& MUCH MUCH MORE!

TWO USB PORTS
BALL SCREWS & SERVO MOTORS FOR X,Y & Z AXES
8 STATION AUTOMATIC TOOLCHANGER
BUILT IN JERGENS BALL LOCKS ON TABLE
AUTOMATIC LUBRICATION SYSTEM
COOLANT SYSTEM
3 HORSE POWER SPINDLE MOTOR



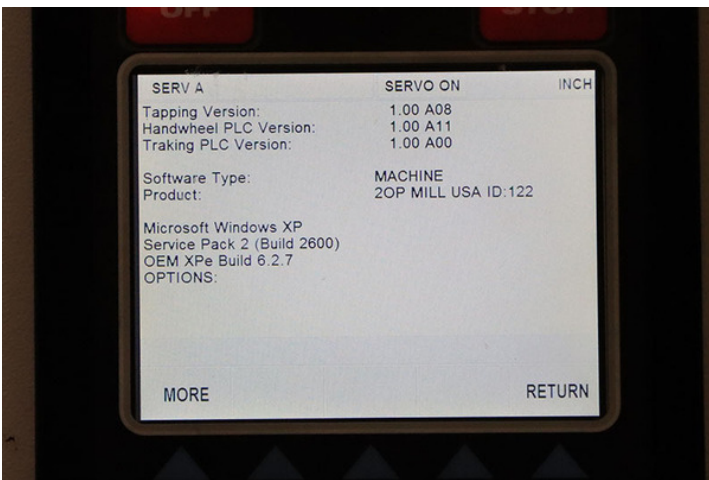
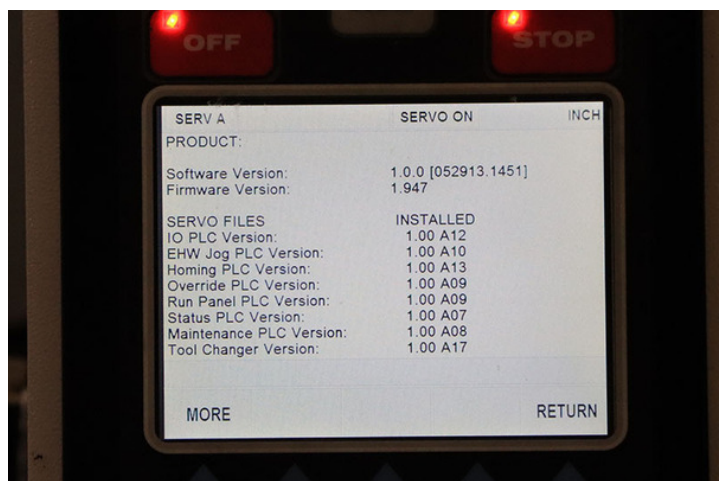
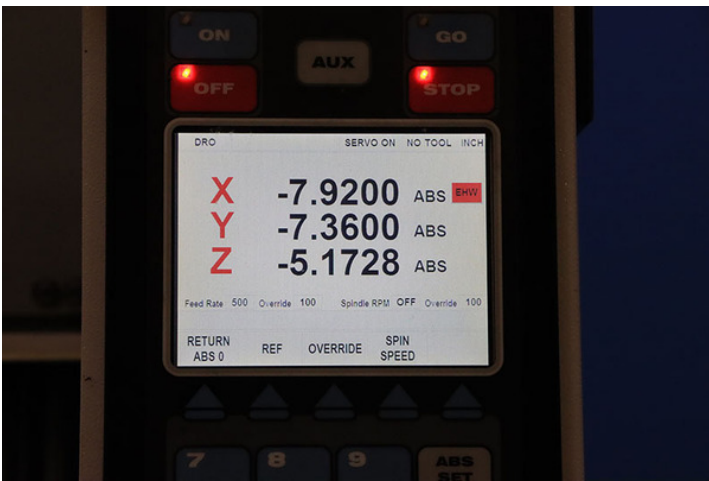
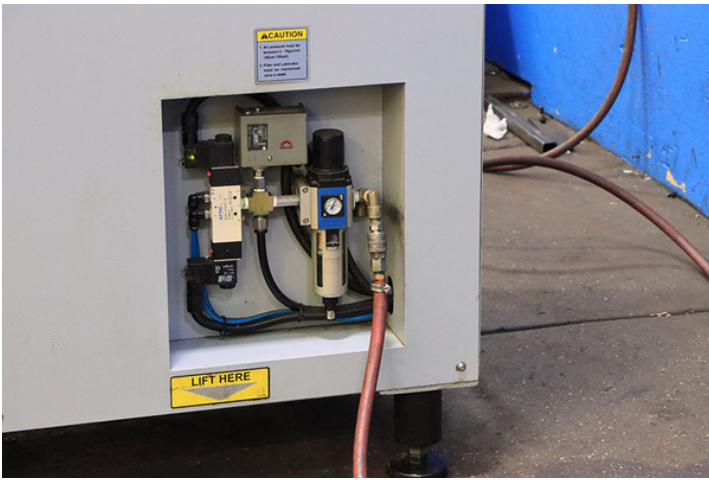
PRICE.....\$22,900

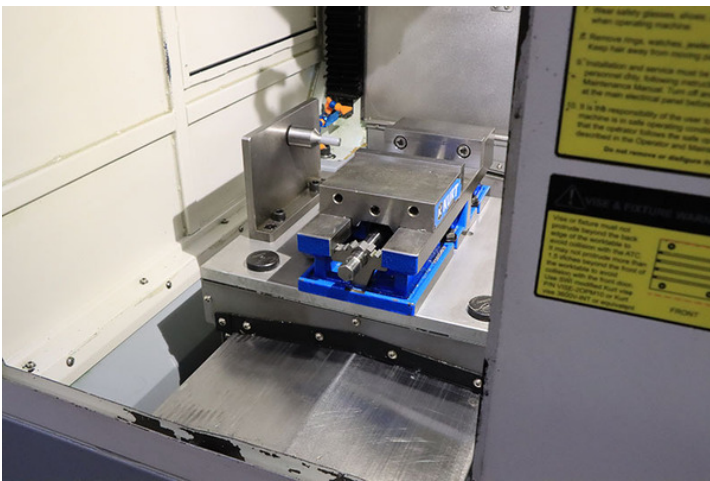
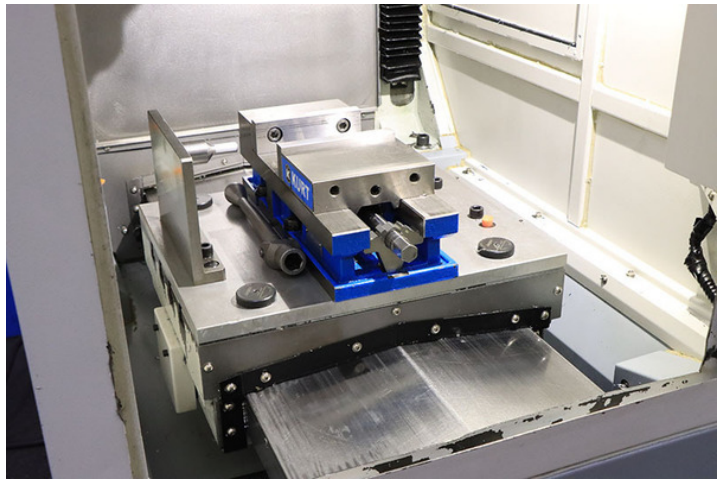
Best Regards,

Mike Heim - Sales Manager




Two Spade Machinery LLC
Mobile: (207) 300-3649
Email: mike@2spade.com







SOUTHWESTERN INDUSTRIES
2615 HOMESTEAD PLACE.
RANCHO DOMINGUEZ, CA 90220

 **SWI**

MODEL **TRAK-20P-M10-MILL**
S/N **142DQ636**

ELECTRICAL RATINGS:
220 VOLTS **18** AMPS **3** PHASE
60 Hz

FLA OF LARGEST MOTOR **8.7** AMPS
SHORT CIRCUIT INTERRUPT **1K** AMPS
ELECTRICAL DRAWING #: **27650-SCH**

CNC CONTROL ELECTRICAL RATINGS:
IF APPLICABLE
115 VOLTS **12** AMPS **1** PHASE
60 Hz

MACHINE (ONLY) MADE IN TAIWAN

ASSEMBLED BY: **JOE JIMENEZ**

INSPECTED BY: **LEO PARRA**

PCN: **0048**
REV: **-**
P.N.: **38**